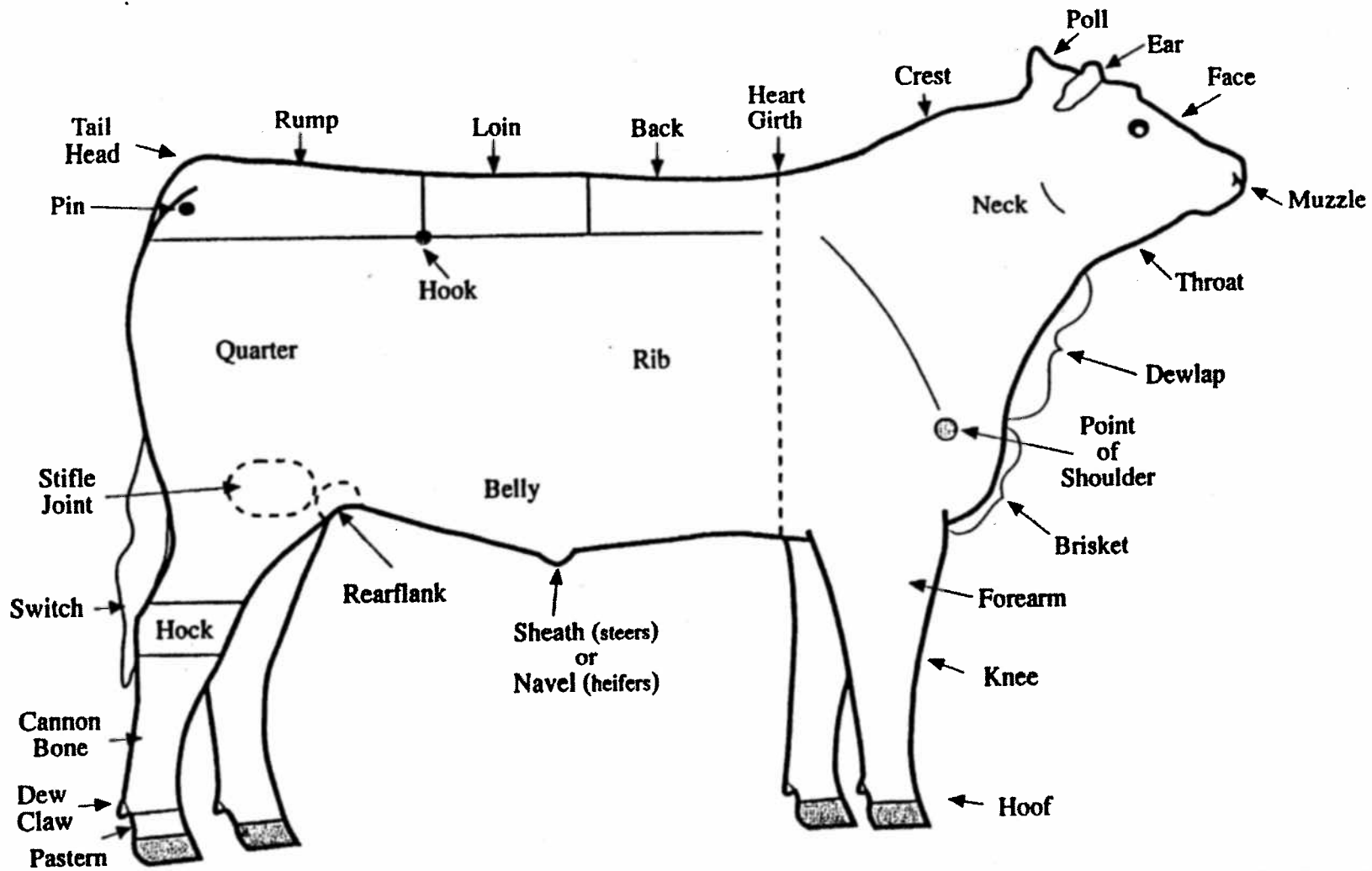


Parts of a Beef Animal



Use this poster in conjunction with Body Structure - Match Names with Parts situation/task statement and/or Parts of a Beef Animal Identification tags



Quality Assurance and Animal Care: Youth Education Program
 This material is based upon work supported by Extension Service,
 United States Department of Agriculture, under special project number 93-EFSQ-4096.
 Graphic used with the express permission of the Ohio State University Extension.

Product distribution through the Ohio Agricultural Education Curriculum Materials Service